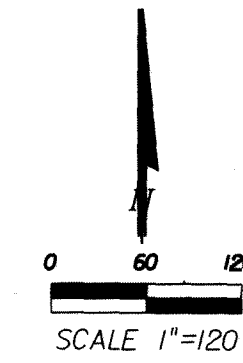
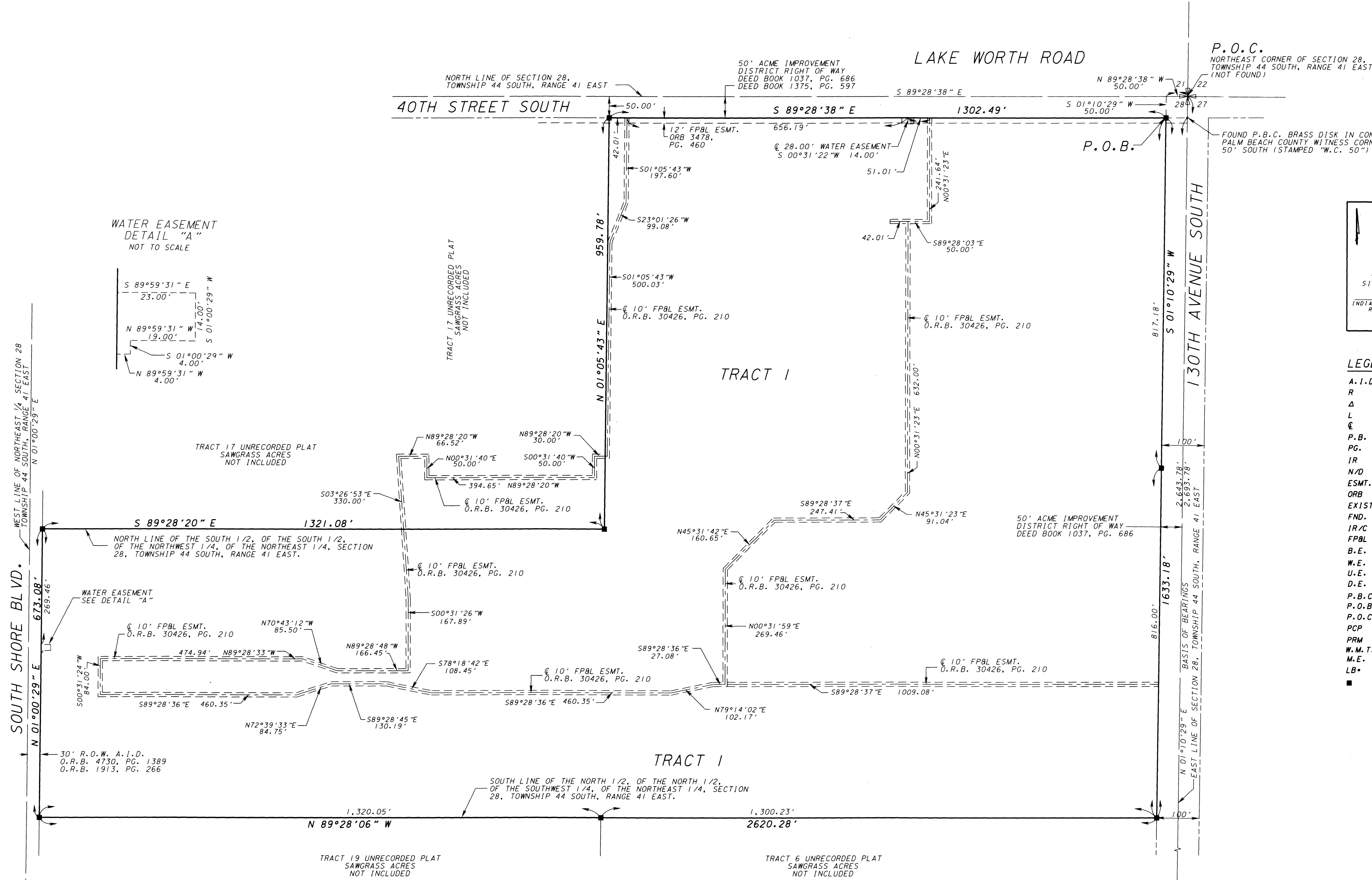


# IRON SPRING FARM

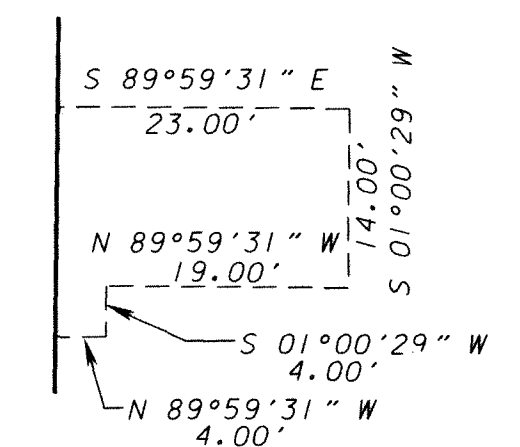
LYING IN SECTION 28, TOWNSHIP 44 SOUTH, RANGE 41 EAST  
 VILLAGE OF WELLINGTON, PALM BEACH COUNTY, FLORIDA  
 OCTOBER, 2019  
 SHEET 2 OF 2



177



WATER EASEMENT  
 DETAIL "A"  
 NOT TO SCALE



TRACT 17 UNRECORDED PLAT  
 SAWGRASS ACRES  
 NOT INCLUDED

TRACT 17 UNRECORDED PLAT  
 SAWGRASS ACRES  
 NOT INCLUDED

WEST LINE OF NORTHEAST 1/4 SECTION 28  
 TOWNSHIP 44 SOUTH, RANGE 41 EAST  
 N 01°00'29\"/>

NORTH LINE OF THE SOUTH 1/2, OF THE SOUTH 1/2,  
 OF THE NORTHWEST 1/4, OF THE NORTHEAST 1/4, SECTION  
 28, TOWNSHIP 44 SOUTH, RANGE 41 EAST.

WATER EASEMENT,  
 SEE DETAIL "A"

30' R.O.W. A.I.D.  
 O.R.B. 4730, PG. 1389  
 O.R.B. 1913, PG. 266

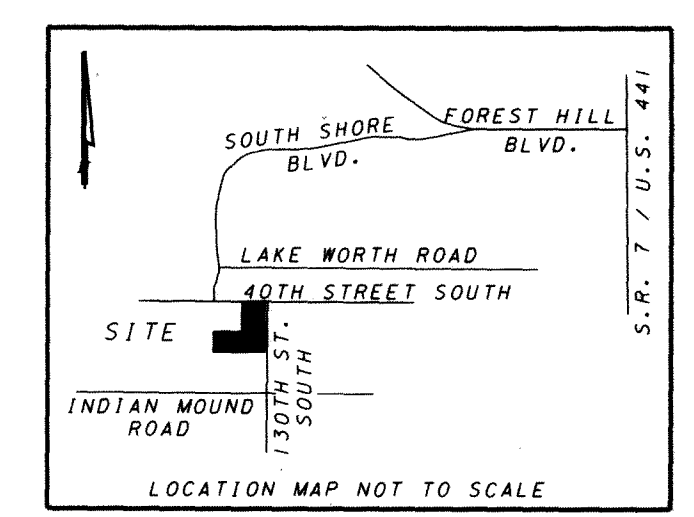
TRACT 19 UNRECORDED PLAT  
 SAWGRASS ACRES  
 NOT INCLUDED

TRACT 6 UNRECORDED PLAT  
 SAWGRASS ACRES  
 NOT INCLUDED

FOUND P.B.C. BRASS DISK IN CONC.  
 EAST QUARTER CORNER OF SECTION 28,  
 TOWNSHIP 44 SOUTH, RANGE 41 EAST

P.O.C.  
 NORTHEAST CORNER OF SECTION 28,  
 TOWNSHIP 44 SOUTH, RANGE 41 EAST  
 (NOT FOUND)

FOUND P.B.C. BRASS DISK IN CONC.  
 PALM BEACH COUNTY WITNESS CORNER  
 50' SOUTH (STAMPED "W.C. 50")



**LEGEND & ABBREVIATIONS:**

- A.I.D. ACME IMPROVEMENT DISTRICT
- R RADIUS LENGTH
- Δ DELTA ANGLE
- L ARC LENGTH
- ⊕ CENTER LINE
- P.B. PLAT BOOK
- PG. PAGE
- IR IRON ROD
- N/D NAIL & DISK
- ESMT. EASEMENT
- ORB OFFICIAL RECORD BOOK
- EXIST EXISTING
- FND. FOUND
- IR/C IRON ROD & CAP
- FPBL FLORIDA POWER & LIGHT
- B.E. BUFFER EASEMENT
- W.E. WATER EASEMENT
- U.E. UTILITY EASEMENT
- D.E. DRAINAGE EASEMENT
- P.B.C. PALM BEACH COUNTY
- P.O.B. POINT OF BEGINNING
- P.O.C. POINT OF COMMENCEMENT
- PCP PERMANENT CONTROL POINT
- PRM PERMANENT REFERENCE MONUMENT
- W.M.T. WATER MANAGEMENT TRACT
- M.E. MAINTENANCE EASEMENT
- LB. LICENSED BUSINESS NUMBER
- SET PRM LB. 6837